

The London Geodiversity Partnership has been trying to get permission to conserve Harefield since 2010 so we are delighted to announce that it has finally happened. We visited in 2018 with the Agent for the owner when Natural England drew up a draft Management Plan. Our objective on this occasion was to clear the access and we were delighted to get permission to do this before the vegetation grew too much.

Many thanks to members of the London Geodiversity Partnership and Harrow and Hillingdon Geological Society for the hard work. Seven of us managed to achieve what we set out to do and we thank John Gill for talking photographs.

## Before

## After



Shoulder-high grasses, thistles & nettles in field

*Track created through and What3 Words and grid refs noted*



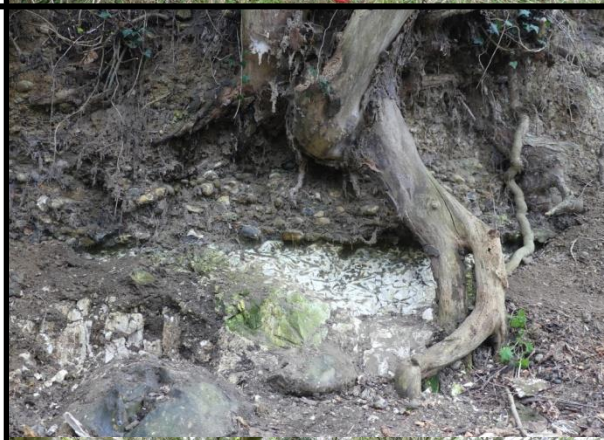
Barrier of scrub hides the face

*Passage way cut through*



Vegetation and scree obscuring Chalk/Upnor contact and underlying flints of section 1

*Vegetation cleared and flints made visible again*



Overhanging vegetation and scree obscures much of the Lambeth Group section (2)

*Vegetation cleared but scree not touched. We believe the scree arises from falls rather than badger activity*

